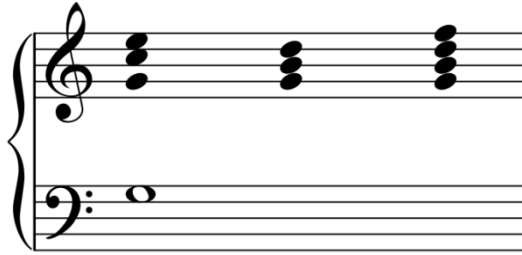


# Pedals

## Dominant pedals

Dominant pedals are the most common type and a range of consonant and dissonant chords can be played over them. Most of these chords work best when they resolve each time onto some sort of V chord before going onto another one.

### Diatonic



C: V<sub>6</sub>                      5                      7  
 Chromatic 4                      3



C: V of G      vii of G      vii of G      V<sub>b9</sub>  
                   (secondary                      (diminished                      7  
                   dominant)                      7<sup>th</sup>)                      7

### Passing notes



These are the main diatonic and chromatic passing notes that work in thirds or sixths. They can also work as auxiliaries.



at King Ed's

# Pedals

## Tonic pedals

Tonic pedals are very similar in the way that they work. The following chords fit particularly well over a tonic pedal:

- I
- ii
- IV
- V<sup>7</sup>
- vii